



## Coaxial Solutions

The coaxial C-Series loudspeakers are equipped with uncompromising chassis technology and perfect balanced passive crossovers. The coaxial loudspeaker technology allows a very compact design and a constant coverage with excellent tonal balance and dynamic. The 90° symmetrical coverage allows the horizontal and vertical use. The C-Series is the perfect solution for indoor - outdoor installations and rental applications. All C-Series fullrange speakers and subwoofers are equipped with a U-bracket as standard.

The C-Series 15" passive subwoofer with 100mm voice coil and a precise tuned compact cabinet is the perfect extension for all C-Series fullrange speakers.

The CB15A is a self powered subwoofer. The powerful 3 channel amplifier module delivers 1000 W (AES) for the subwoofer channel and additional 2 x 500 W (AES) for mid/high cabinets. The switch mode power supply can deliver large headroom for the amplifiers even at full power. The 96KHz / 24-bit DSP engine features all controller functions as Noise Gate, crossover filters, parametric EQs per input and output sections, alignment delay, all in all everything needed to optimize a self-powered loudspeaker. All setup parameters for input mixing, DSP features and the limiter setting are accessible by using the remote PC software.



## Features

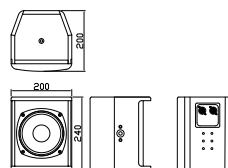
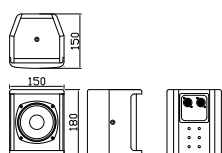
- Weatherproof cabinet IP 54
- Polyurea coating for long lasting permanent installation
- Perforated, galvanized and anodized front grill
- High performance coaxial loudspeakers
- High driver PTC protection
- 90° x 90° dispersion, C15 with 90° x 70° dispersion
- Subwoofers with integrated rigging points
- U-bracket for single use included as standard
- Optional array adapter for cluster application
- Optional Speakon protection cover
- Active Subwoofer with integrated 3 channel amplifier and DSP
- Remote Controll Software

## Accessories

K&M  
Screw-on adapter

K&M  
Mounting adapter

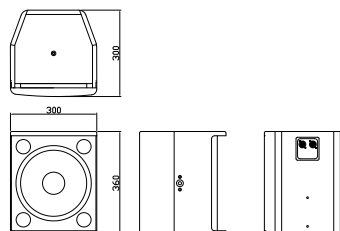
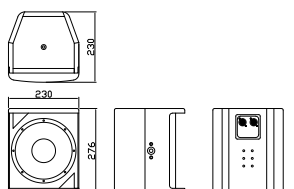

## Technical Data



System	4.5" wideband, full range
Frequency Range (-10 dB):	100 Hz - 18 kHz
Coverage Pattern HxV:	90° x 90°
Crossover Frequency:	wideband
Power Rating (AES/Program)	80 W / 160 W
Maximum SPL:	116 dB SPL
System Sensitivity (1w/1m):	92 dB SPL
Nominal Impedance:	8 ohms
Speaker:	4C80
Enclosure:	12 mm, birch plywood
Suspension / Mounting:	10 x M6
Finish:	Black polyurea coating, IP 54
Grille:	Powder coated, black perforated steel with acoustic cloth inside
Input Connectors:	2 x Speakon NL 4 1+/- / 2+/- to Sub
Dimensions (W x H x D):	150 mm x 180 mm x 150 mm
Net Weight:	2 kg
Optional Accessories:	Speakon protection cover K&M Screw-On adapter K&M Mounting adapter

System	6.5/1" coaxial, full range
Frequency Range (-10 dB):	80 Hz - 20 kHz
Coverage Pattern HxV:	90° x 90°
Crossover Frequency:	2250 Hz passive
Power Rating (AES/Program)	250 W / 500 W
Maximum SPL:	123 dB SPL
System Sensitivity (1w/1m):	96 dB SPL
Nominal Impedance:	8 ohms
Speaker:	6C250
Enclosure:	12 mm, birch plywood
Suspension / Mounting:	8 x M6, 2 x M10
Finish:	Black polyurea coating, IP 54
Grille:	Powder coated, black perforated steel with acoustic cloth inside
Input Connectors:	2 x Speakon NL4 1+/- / 2+/- to Sub
Dimensions (W x H x D):	200 mm x 240 mm x 200 mm
Net Weight:	7 kg
Optional Accessories:	Speakon protection cover K&M Screw-On adapter K&M Mounting adapter

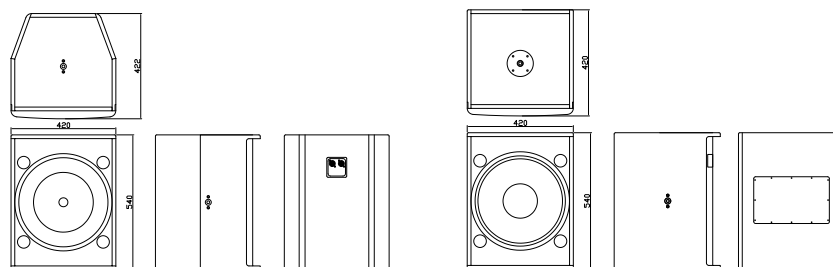
## Technical Data



System	8"/1" coaxial, full range
Frequency Range (-10 dB):	55 Hz - 20 kHz
Coverage Pattern HxV:	90° x 90°
Crossover Frequency:	1.800 Hz passive
Power Rating (AES/Program)	300 W / 600 W
Maximum SPL:	124 dB SPL
System Sensitivity (1w/1m):	96 dB SPL
Nominal Impedance:	8 ohms
Speaker:	8C300
Enclosure:	15 mm, birch plywood
Suspension / Mounting:	8 x M6, 2 x M10
Finish:	Black polyurea coating, IP 54
Grille:	Powder coated, black perforated steel with acoustic cloth inside
Input Connectors:	2 x Speakon NL4 1+/- / 2+/- to Sub
Dimensions (W x H x D):	230 mm x 276 mm x 230 mm
Net Weight:	10 kg
Optional Accessories:	Speakon protection cover K&M Screw-On adapter K&M Mounting adapter

System	10"/1" coaxial, full range
Frequency Range (-10 dB):	55 Hz - 20 kHz
Coverage Pattern HxV:	90° x 90°
Crossover Frequency:	1.700 Hz passive
Power Rating (AES/Program)	350 W / 700 W
Maximum SPL:	128 dB SPL
System Sensitivity (1w/1m):	97 dB SPL
Nominal Impedance:	8 ohms
Speaker:	10C350
Enclosure:	15 mm, birch plywood
Suspension / Mounting:	4 x M6, 2 x M10
Finish:	Black polyurea coating, IP 54
Grille:	Powder coated, black perforated steel with acoustic cloth inside
Input Connectors:	2 x Speakon NL4 1+/- / 2+/- to Sub
Dimensions (W x H x D):	300 mm x 360 mm x 300 mm
Net Weight:	15 kg
Optional Accessories:	Speakon protection cover K&M Screw-On adapter K&M Mounting adapter

## Technical Data



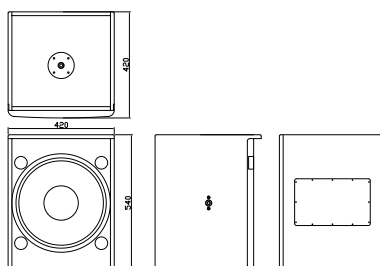
### C 15

System	15"/1.4" coaxial, full range
Frequency Range (-10 dB):	52 Hz - 20 kHz
Coverage Pattern HxV:	90° x 70°
Crossover Frequency:	1.200 Hz passive
Power Rating (AES/Program)	800 W / 1600 W
Maximum SPL:	134 dB SPL
System Sensitivity (1w/1m):	101 dB SPL
Nominal Impedance:	8 ohms
Speaker:	15C800
Enclosure:	15 mm, birch plywood
Suspension / Mounting:	4 x M10
Finish:	Black polyurea coating, IP 54
Grille:	Powder coated, black perforated steel with acoustic cloth inside
Input Connectors:	2 x Speakon NL 4 1+/1- / 2+/2- to Sub
Dimensions (W x H x D):	420 mm x 540 mm x 420 mm
Net Weight:	28 kg
Optional Accessories:	Speakon protection cover K&M Screw-On adapter K&M Mounting adapter

### CB 15

15 Subwoofer
42 Hz - 300 Hz
omni
----
800 W / 1600 W
130 dB SPL
98 dB SPL
8 ohms
15CB800
15 mm, birch plywood
2 x M10, 1 x M20
Black polyurea coating, IP 54
Powder coated, black perforated steel with acoustic cloth inside
2 x Speakon NL 4
2+/2- / 1+/1- to Top
420 mm x 540 mm x 420 mm
27 kg
Speakon protection cover

## Technical Data

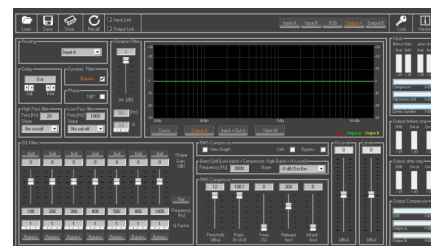
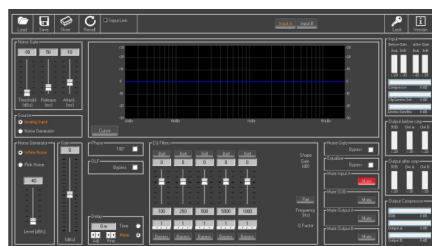


### CB 15 A

System	15" three channel active subwoofer
Frequency Range (-10 dB):	42 Hz - 300 Hz
Crossover Frequency:	70 Hz to 140 Hz with internal DSP
Power Rating Sub Channel	1 x 1000 W @ 4 Ohms
Power Rating Top Channel	2 x 500 W @ 4 Ohms
Maximum SPL Sub:	130 dB SPL
LF Driver:	15Q800
Enclosure:	15 mm, birch plywood
Suspension / Mounting:	M20 pole socket
Finish:	Black polyurea coating, IP 54
Grille:	Powder coated, black perforated steel with acoustic cloth inside
Connectors:	2 x Speakon NL4, 2+/2- external Sub / 1+/1- Top 2 x XLR combo Line in, 2 x XLR out, 1 x XLR combo MIC in, Chinch in R/L, 1 x USB
Dimensions (W x H x D):	420 mm x 540 mm x 420 mm
Net Weight:	30 kg
Optional Accessories:	Amplifier module protection cover



## Technical Data DSP



DSP Resolution	24bit (data) x 24 bit (coeff.), 54bit accumulation registers, 96 bit precision on intermediate processing data
Parametric Equalization	5 filters on input channel, selected as Bell, Low/High-Shelving variable Q 3 filters on output SUB channel, selected as Bell 7 filters on output A/B channel, selected as Bell, Low/High-Shelving variable Q
Filter Type	Bell, Low/High Shelving Variable Q
Filter Gain	Input from -12dBu up to +12dBu by 0.5dBu resolution steps Output from -18dBu up to +18dBu by 0.5dBu resolution steps
Center Frequency	Selectable with 1Hz resolution step from 20Hz up to 20kHz
Bell Filter Q/BW	Q from 0.5 up to 10 by 0.1 resolution steps
Low/High Shelving Filter Q/BW	Q from 0.5 up to 3 by 0.1 resolution steps
Crossover Section HPF/LPF	Butterworth 6/12/18/24dB per octave Bessel and Linkwitz-Riley 12/24dB per octave Filter resolution 1Hz steps
Output RMS Compressor	Threshold from -18dBu up to +12dBu Knee: 0-100%; Ratio: 2:1-100:1 Release time from 40ms up to 1000ms; Attack time from 5ms up to 100ms
Output Routing	input A/B channel, selected as Bell, Low/High-Shelving variable Q
Delay	In1, In 2, In 1+2 up to 40ms for ea ch input, and up to 20ms for each output, with step of 10.4us

## Applications

